

Measures initiated by the Institution for the promotion of gender equity:

Safety and Security

1. Security Room

Campus Security is responsible for ensuring a safe environment for staff, students and visitors.



SECURITY ROOM

2. Fire Extinguisher

Fire extinguishers are extremely important as they are the most common means for fire protection. These are installed in the college campus for fire safety. In many cases they are a first line of defence and often contain or extinguish a fire, preventing costly damage. They are checked and serviced periodically.



Fire extinguisher installed in the first floor of college building

3. CCTV

CCTVs are installed in the college campus for safety purpose. This helps in monitoring student behavior and tracking individuals/vehicles entering/leaving the premises.



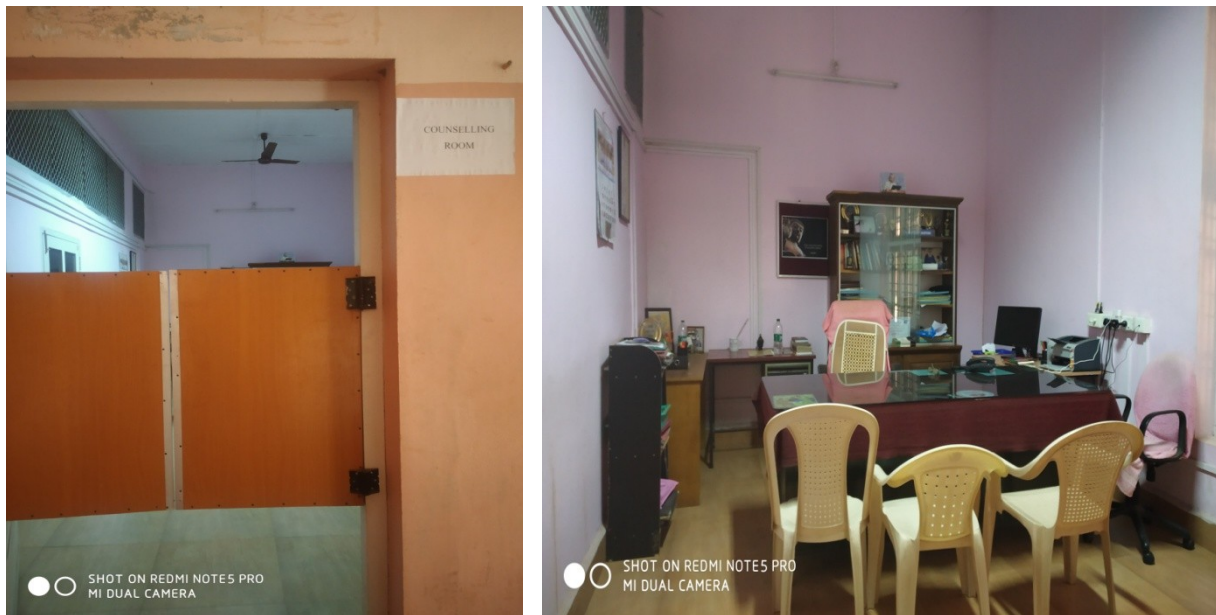
CCTV - GROUND FLOOR



CCTV - COLLEGE OFFICE

4. Counselling

The institution formed a counselling cell to monitor and improve the performance of students in academics. The counselling cell operates by involving faculty members of each department to identify the slow learners and provide extra motivational classes to improve their academic performance. The counselling cell is headed by Rev Fr. Dr. K. M. Koshy Vaidyan, Dean - Student Affairs. He plays a key role in helping the students understand and rectify their deficiencies.



Counselling room

5. Common Room

The institution has established a spacious and comfortable common room for females on the ground floor main building of BMC. This space has been designed to give female students a place to relax, study, have informal discussions outside class hours. College common rooms are known for their special utility. During the break it reloads the overburdened brain, refreshes the tired mind and gives a real blessing for students.



COMMON ROOM FOR GIRLS –GROUND FLOOR